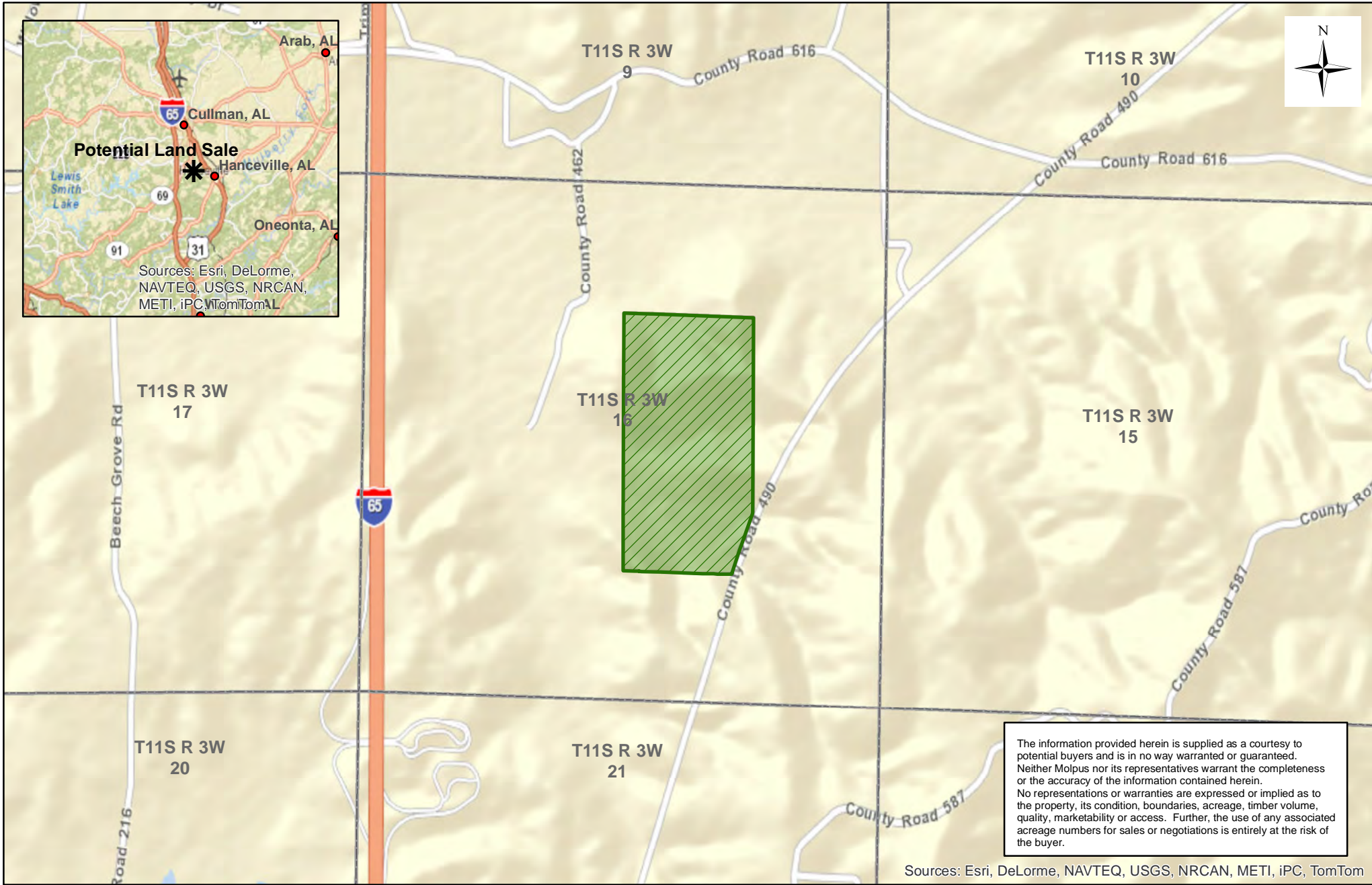


# Jamestown Forestlands Alabama, LLC - Bankhead Unit (0179) - Compartment 078

## Sale Area - 79 +/- Acres



Sources: Esri, DeLorme, NAVTEQ, USGS, NRCAN, METI, iPC, TomTom

Cullman County, AL  
JTFALLS0016

Date: 7/13/2015

