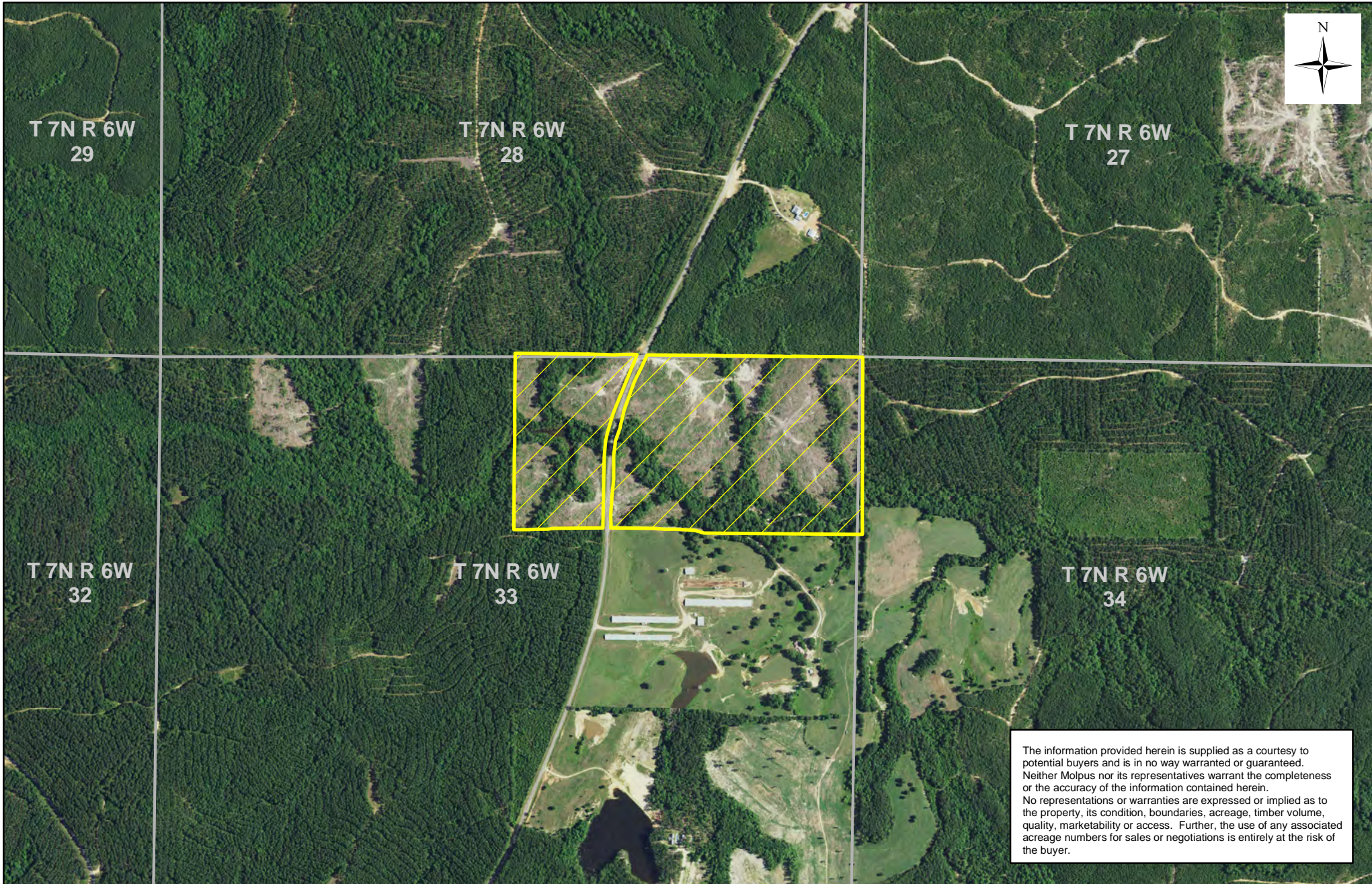


Seven States Timberlands, LLC - Greene Unit (0126) - Compartment 005

Sale Area - 78 +/- Acres



The information provided herein is supplied as a courtesy to potential buyers and is in no way warranted or guaranteed. Neither Molpus nor its representatives warrant the completeness or the accuracy of the information contained herein. No representations or warranties are expressed or implied as to the property, its condition, boundaries, acreage, timber volume, quality, marketability or access. Further, the use of any associated acreage numbers for sales or negotiations is entirely at the risk of the buyer.

Wayne County, MS
PEN_SSTLS0106

Date: 12/6/2017

