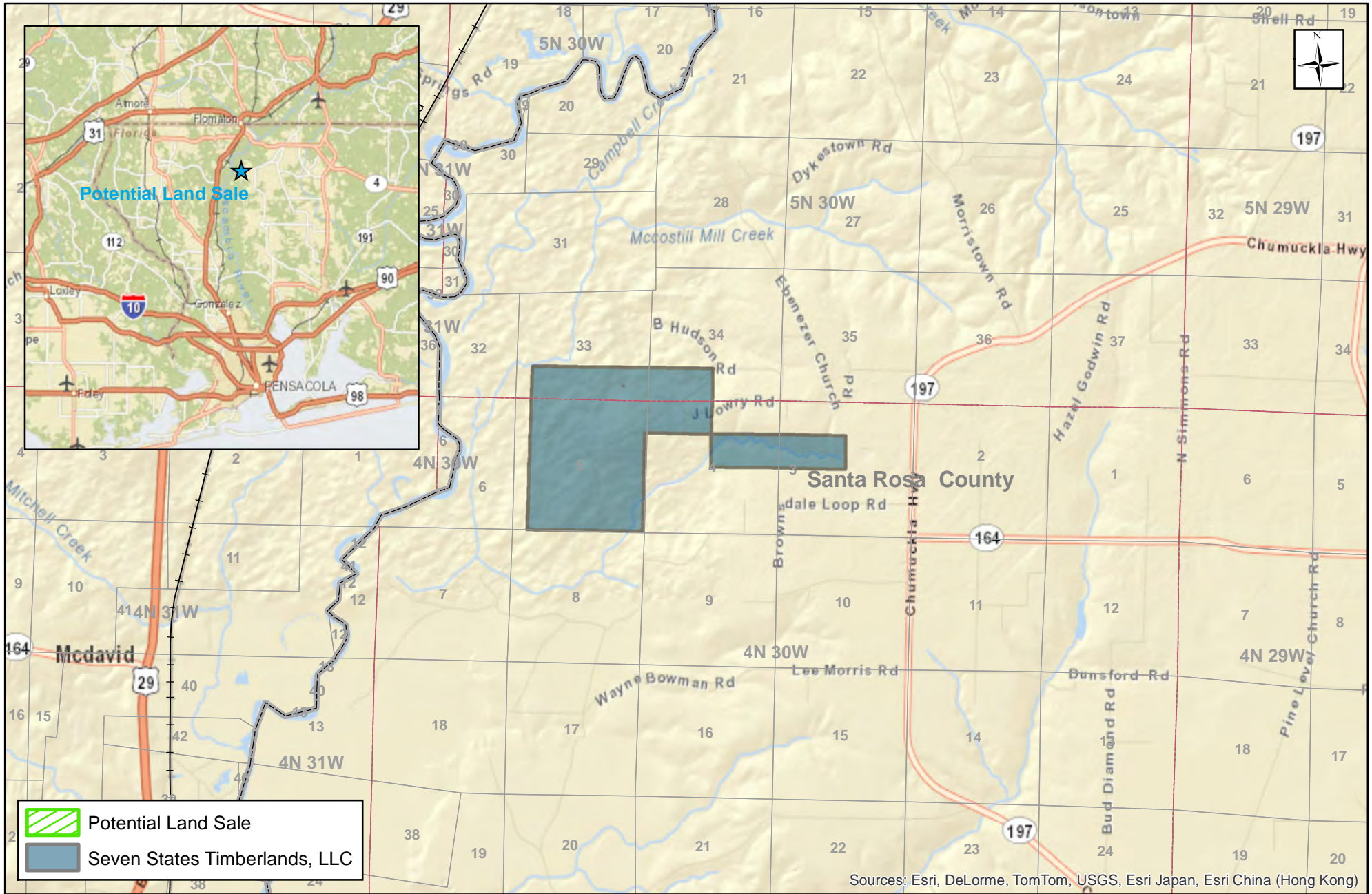


Seven States Timberlands, LLC - Santa Rosa Unit

Potential Land Sale



Sources: Esri, DeLorme, TomTom, USGS, Esri Japan, Esri China (Hong Kong)

Prepared by Molpus Timberlands Management GIS Dept., April 08, 2013.
 Santa Rosa County, Florida
 T4N R30W Sections 3, 4, and 5
 T5N R30W Sections 33 and 34

0 0.5 1 1.5 2 Miles



MOLPUS TIMBERLANDS MANAGEMENT, LLC