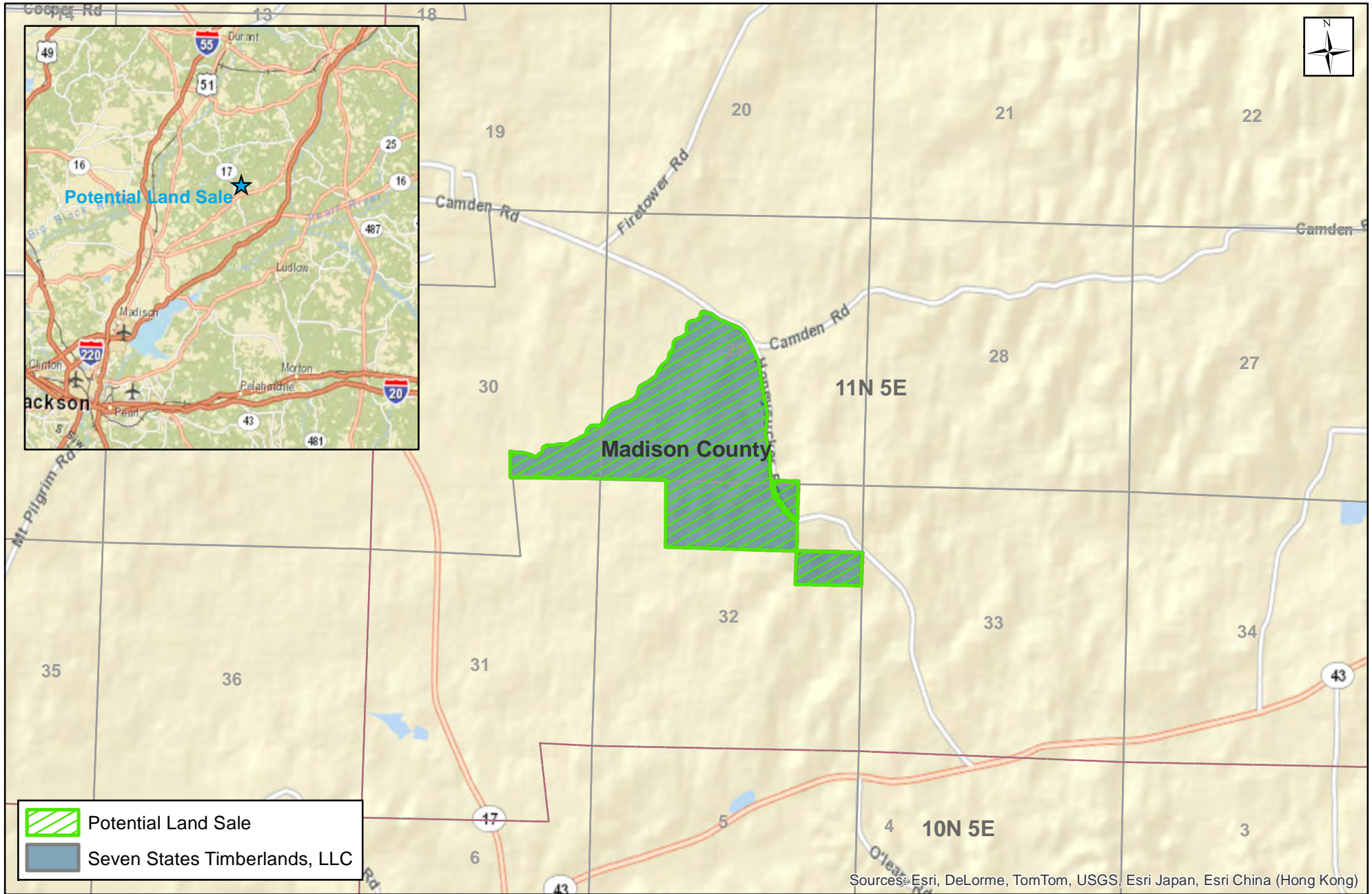


Seven States Timberlands, LLC - Rankin Unit Potential Land Sale



Prepared by Molpus Timberlands Management GIS Dept., April 04, 2013.
Madison County, Mississippi
T11N R5E Sections 29, 30, and 32

0 0.5 1 Miles



MOLPUS TIMBERLANDS MANAGEMENT, LLC