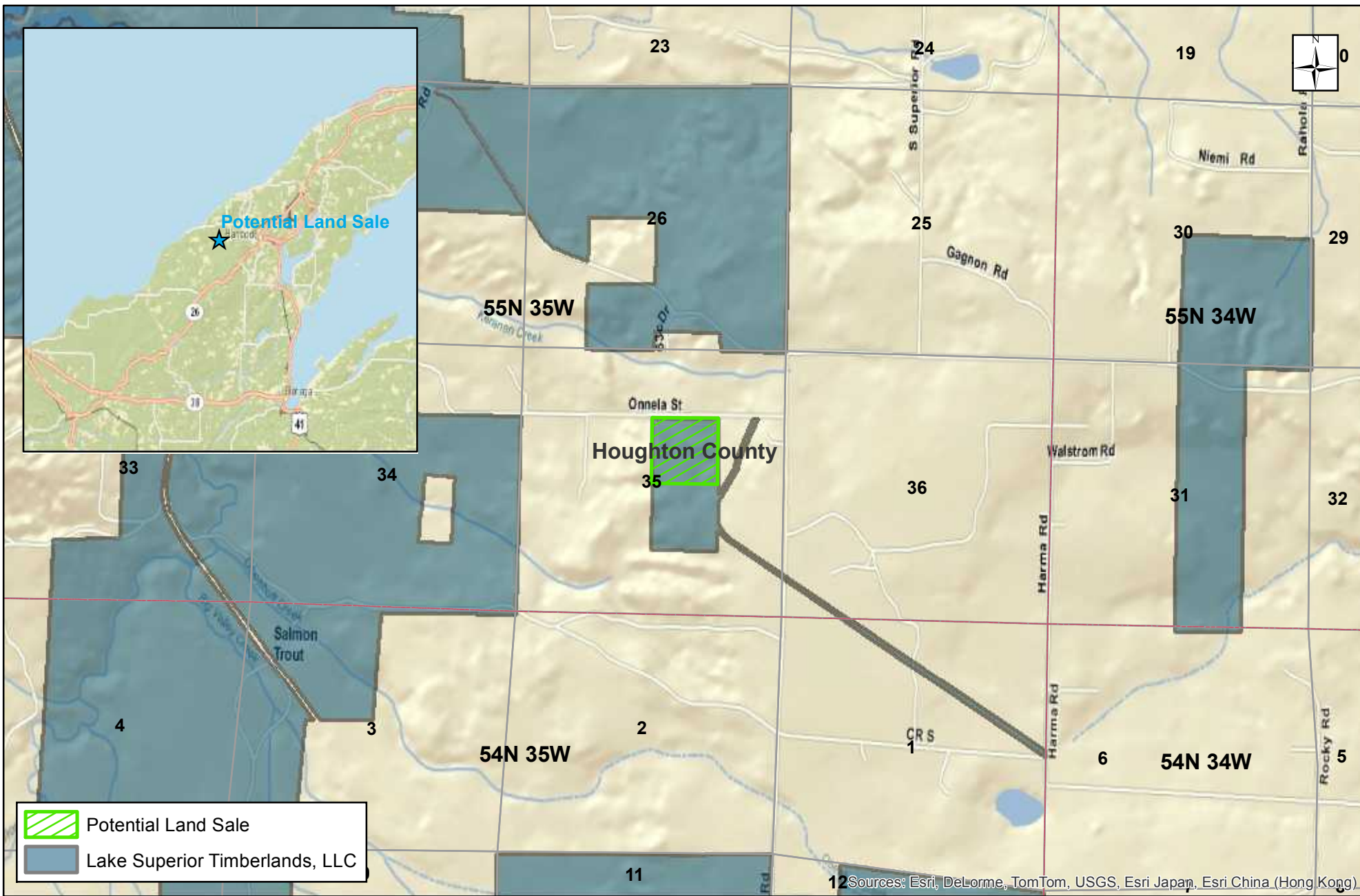


Lake Superior Timberlands, LLC - Houghton Unit Potential Land Sale



Sources: Esri, DeLorme, TomTom, USGS, Esri Japan, Esri China (Hong Kong)

Prepared by Molpus Timberlands Management GIS Dept., September 10, 2013.
Houghton County, MI
T55N R35W Section 35



MOLPUS TIMBERLANDS MANAGEMENT, LLC®