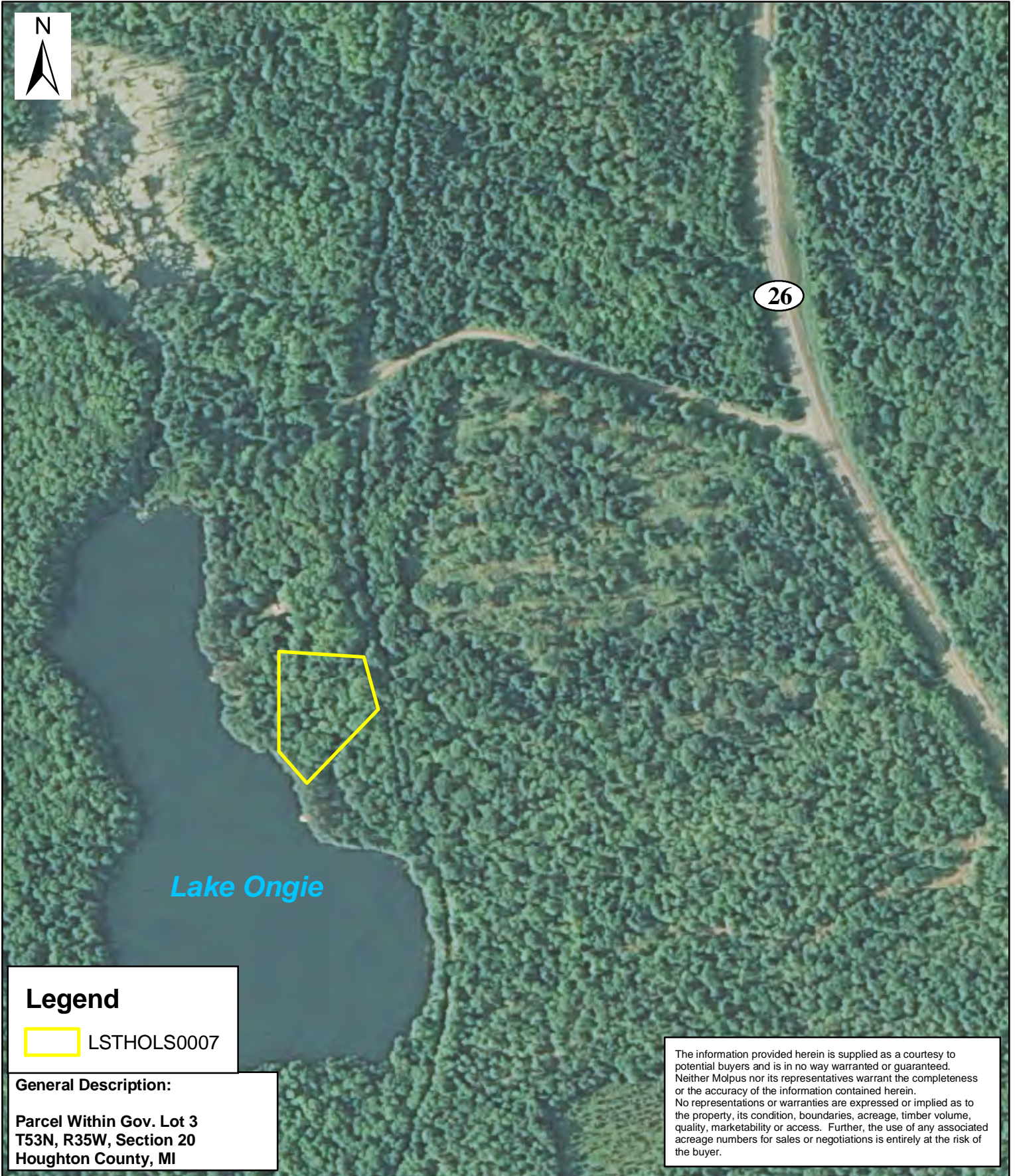



Lake Superior Timberlands, LLC - Michigan's Upper Peninsula
Houghton Unit - Compartment 053
Potential Land Sales - Lake Ongie Parcel 1



26

Lake Ongie

Legend
 LSTHOLS0007

General Description:
**Parcel Within Gov. Lot 3
T53N, R35W, Section 20
Houghton County, MI**

The information provided herein is supplied as a courtesy to potential buyers and is in no way warranted or guaranteed. Neither Molpus nor its representatives warrant the completeness or the accuracy of the information contained herein. No representations or warranties are expressed or implied as to the property, its condition, boundaries, acreage, timber volume, quality, marketability or access. Further, the use of any associated acreage numbers for sales or negotiations is entirely at the risk of the buyer.

