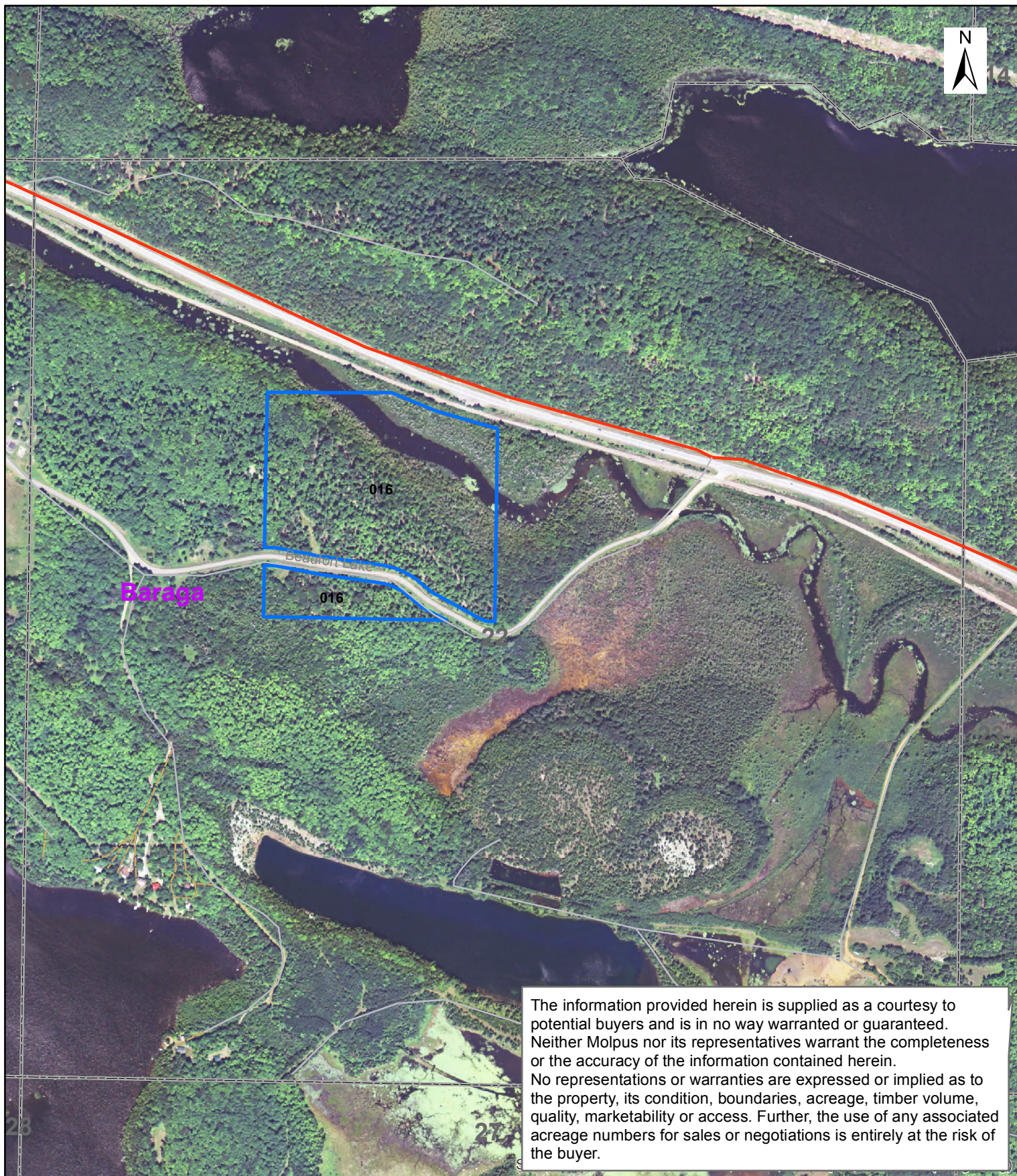


**MWF Ned Lake, LLC - Michigan's Upper Peninsula**  
**Ned Lake Unit - Compartment 16 - Aerial Map**  
**Potential Land Sale - Spurr River**



The information provided herein is supplied as a courtesy to potential buyers and is in no way warranted or guaranteed. Neither Molpus nor its representatives warrant the completeness or the accuracy of the information contained herein. No representations or warranties are expressed or implied as to the property, its condition, boundaries, acreage, timber volume, quality, marketability or access. Further, the use of any associated acreage numbers for sales or negotiations is entirely at the risk of the buyer.

Baraga County, MI  
T48N R31W Section 22  
Part of SENW  
+/-33.8 acres

Produced by Molpus Timberlands Management, GIS Dept. March 16, 2011.

0 0.045 0.09 0.135 0.18 0.225 Miles



MOLPUS TIMBERLANDS MANAGEMENT, LLC