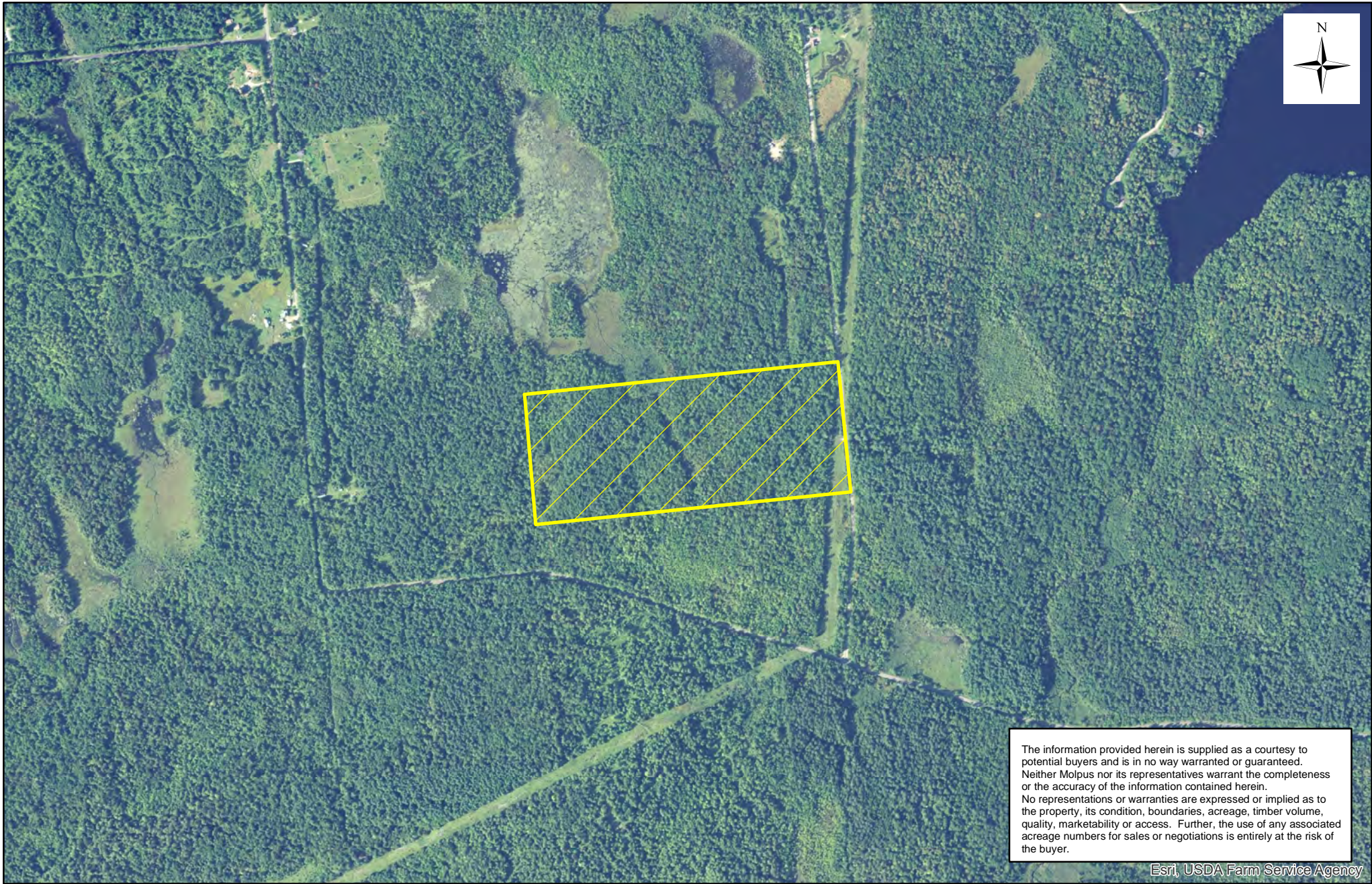


MWF Adirondacks, LLC - Tupper Lake Unit (0187) - Compartment(s) 009
Cold Brook Woods (51 Acres) - 51.42 +/- Acres

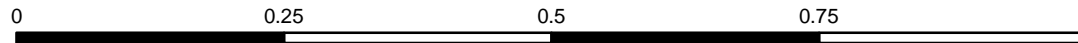


The information provided herein is supplied as a courtesy to potential buyers and is in no way warranted or guaranteed. Neither Molpus nor its representatives warrant the completeness or the accuracy of the information contained herein. No representations or warranties are expressed or implied as to the property, its condition, boundaries, acreage, timber volume, quality, marketability or access. Further, the use of any associated acreage numbers for sales or negotiations is entirely at the risk of the buyer.

Esri, USDA Farm Service Agency

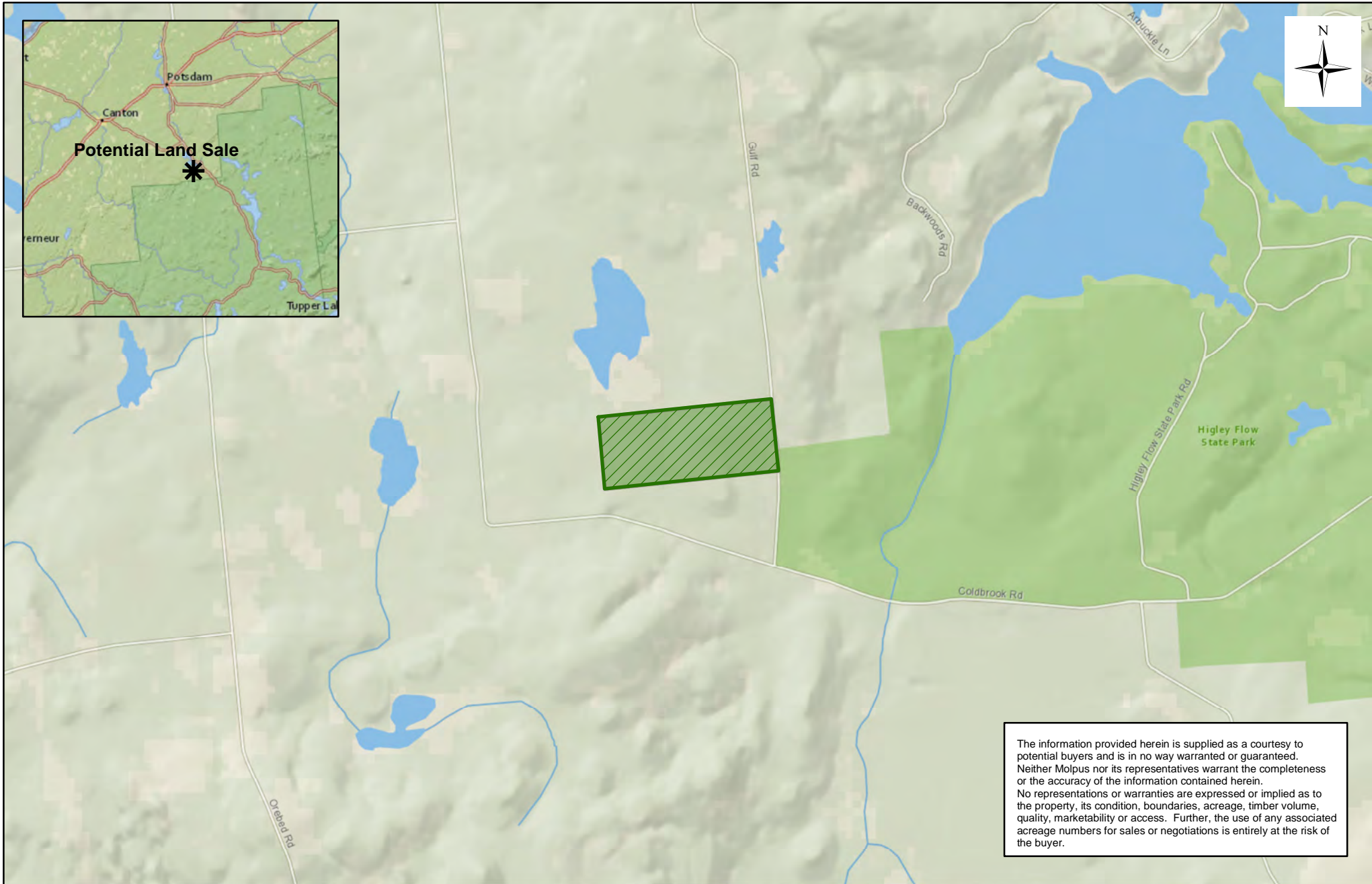
St. Lawrence, NY
MWFADLS0018

Date: 1/10/2019



MOLPUS WOODLANDS GROUP

MWF Adirondacks, LLC - Tupper Lake Unit (0187) - Compartment(s) 009 Cold Brook Woods (51 Acres) - 51.42 +/- Acres



The information provided herein is supplied as a courtesy to potential buyers and is in no way warranted or guaranteed. Neither Molpus nor its representatives warrant the completeness or the accuracy of the information contained herein. No representations or warranties are expressed or implied as to the property, its condition, boundaries, acreage, timber volume, quality, marketability or access. Further, the use of any associated acreage numbers for sales or negotiations is entirely at the risk of the buyer.

St. Lawrence, NY
MWFADLS0018

Date: 1/10/2019



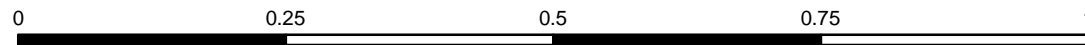
MWF Adirondacks, LLC - Tupper Lake Unit (0187) - Compartment(s) 009

Cold Brook Woods (51 Acres) - 51.42 +/- Acres



St. Lawrence, NY
MWFADLS0018

Date: 1/10/2019



Miles MOLPUS WOODLANDS GROUP

