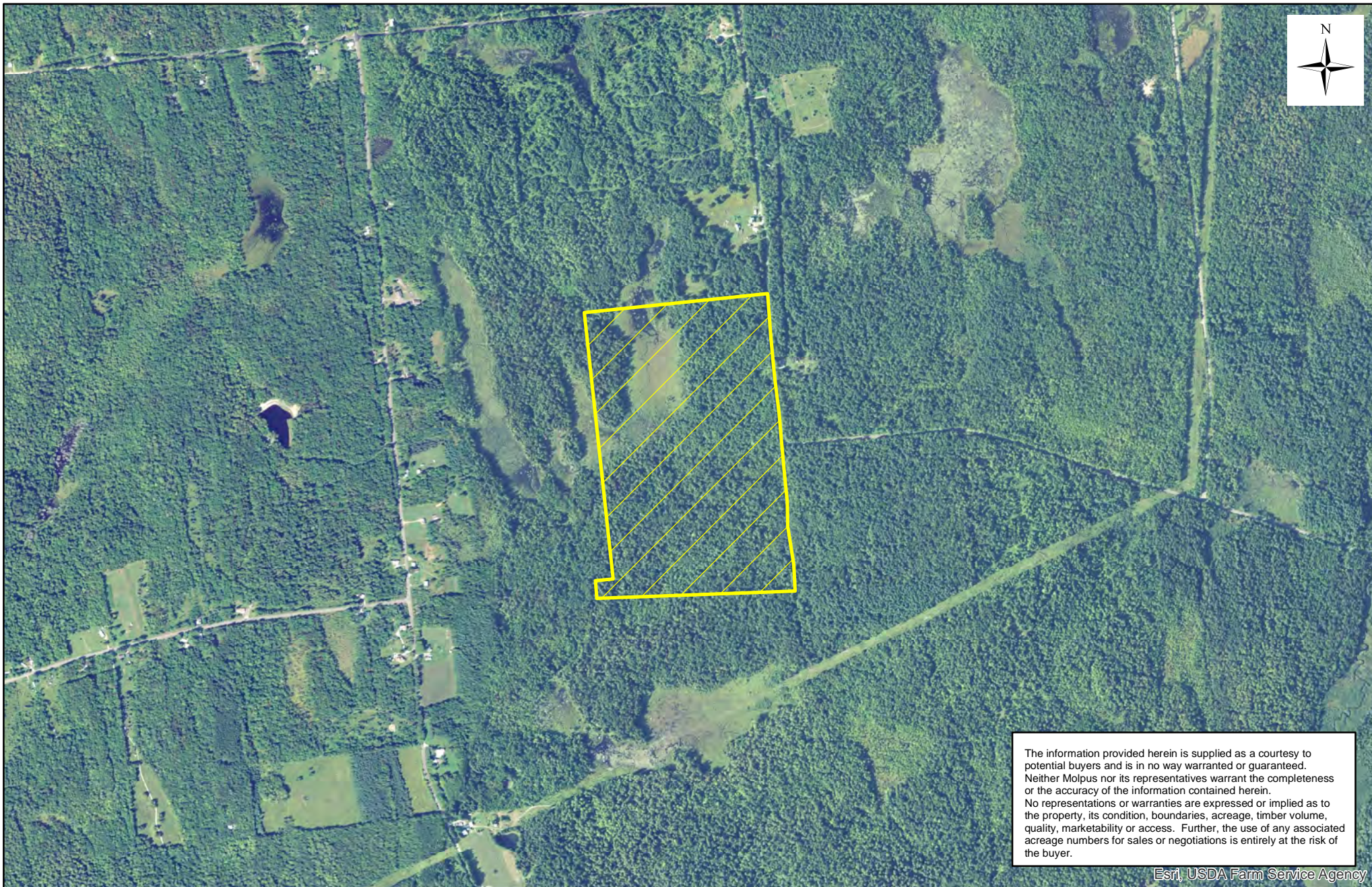


MWF Adirondacks, LLC - Tupper Lake Unit (0187) - Compartment(s) 009

Cold Brook Woods (102 Acres) - 102.34 +/- Acres

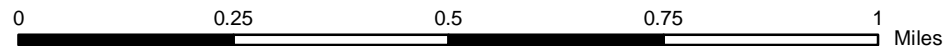


The information provided herein is supplied as a courtesy to potential buyers and is in no way warranted or guaranteed. Neither Molpus nor its representatives warrant the completeness or the accuracy of the information contained herein. No representations or warranties are expressed or implied as to the property, its condition, boundaries, acreage, timber volume, quality, marketability or access. Further, the use of any associated acreage numbers for sales or negotiations is entirely at the risk of the buyer.

Esri, USDA Farm Service Agency

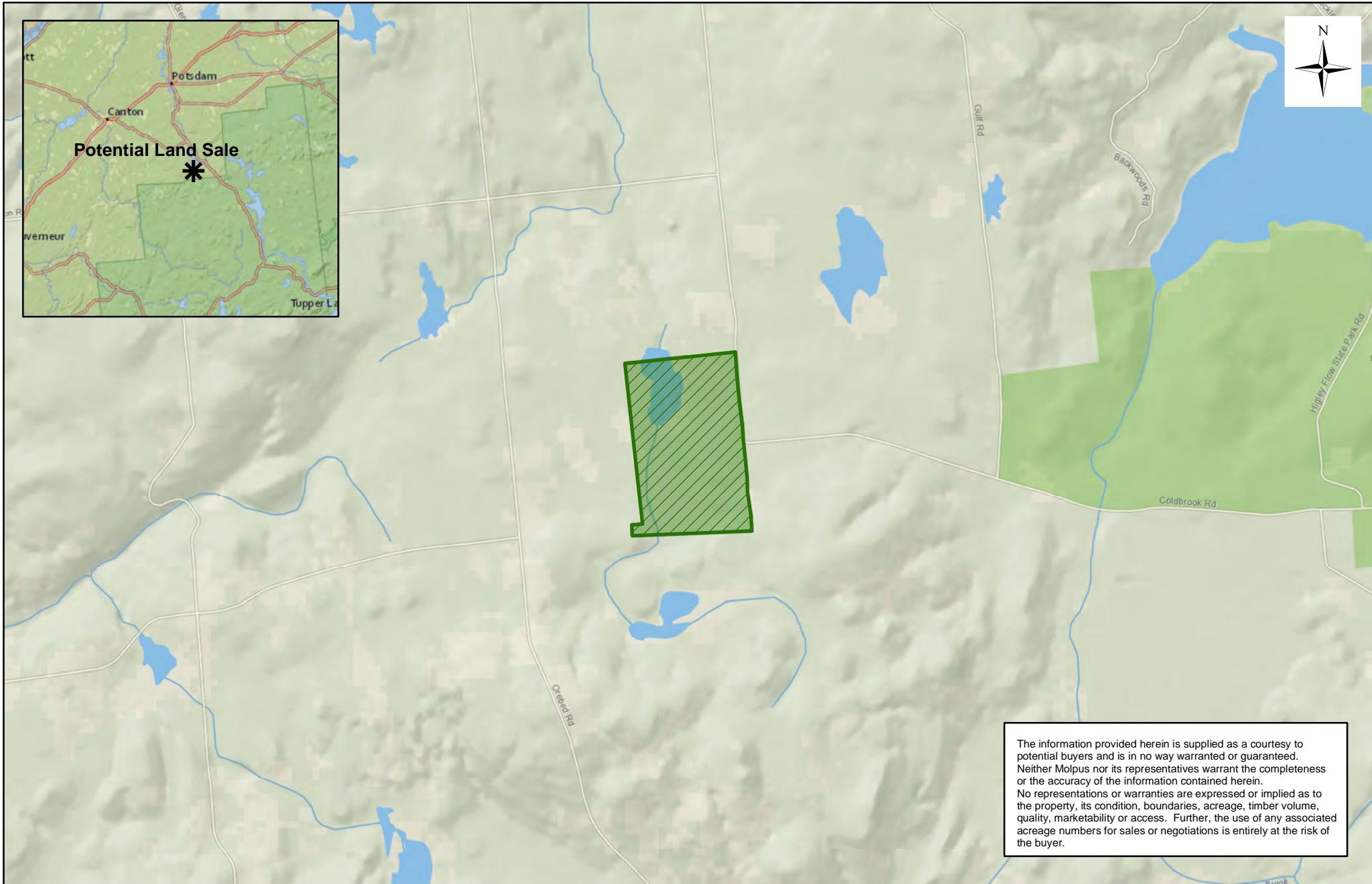
St. Lawrence, NY
MWFADLS0009

Date: 1/10/2019



MWF Adirondacks, LLC - Tupper Lake Unit (0187) - Compartment(s) 009

Cold Brook Woods (102 Acres) - 102.34 +/- Acres



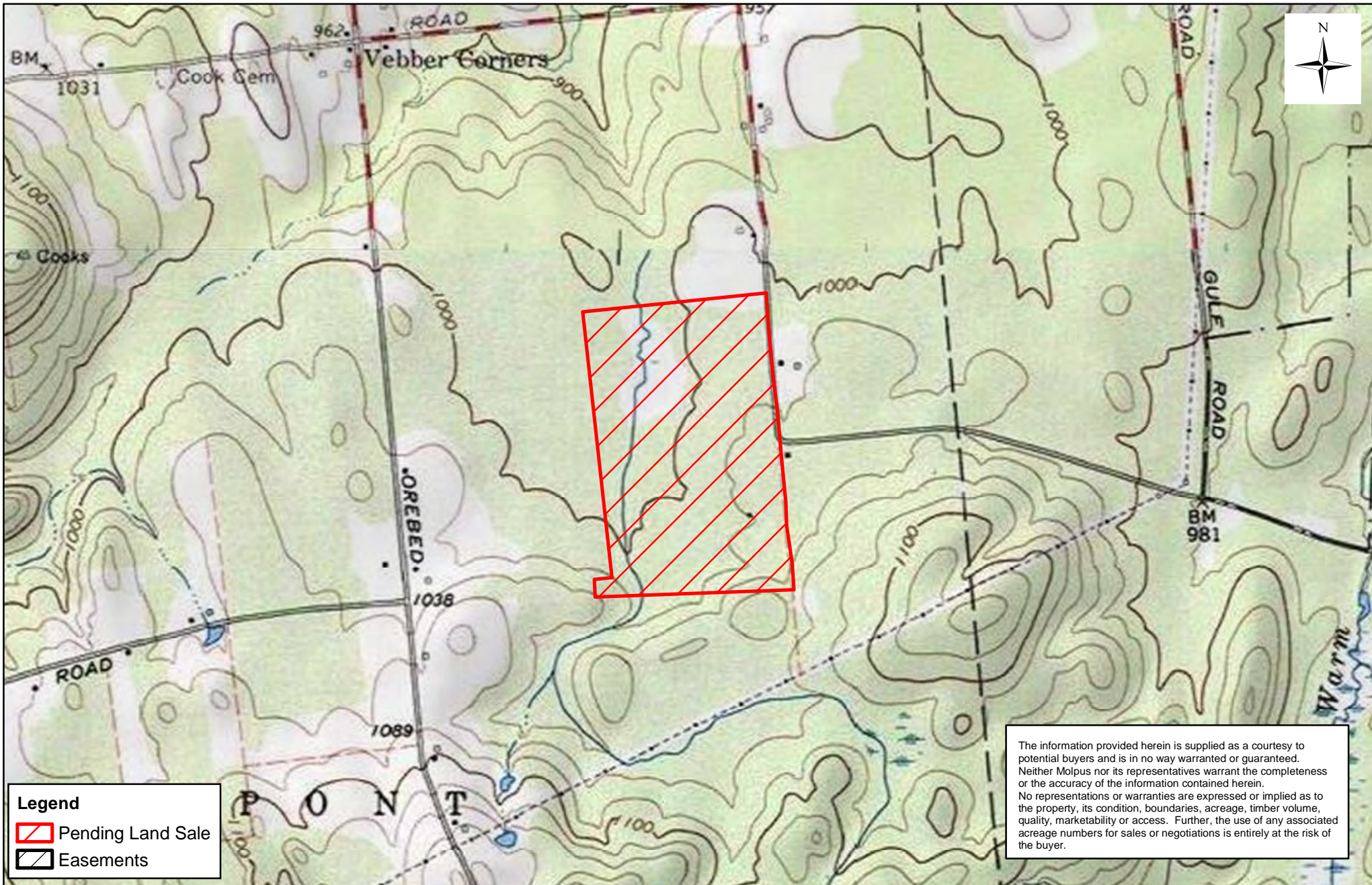
The information provided herein is supplied as a courtesy to potential buyers and is in no way warranted or guaranteed. Neither Molpus nor its representatives warrant the completeness or the accuracy of the information contained herein. No representations or warranties are expressed or implied as to the property, its condition, boundaries, acreage, timber volume, quality, marketability or access. Further, the use of any associated acreage numbers for sales or negotiations is entirely at the risk of the buyer.

St. Lawrence, NY
MWFADLS0009

Date: 1/10/2019



MWF Adirondacks, LLC - Tupper Lake Unit (0187) - Compartment(s) 009 Cold Brook Woods (102 Acres) - 102.34 +/- Acres



St. Lawrence, NY
MWFADLS0009

Date: 1/10/2019

